

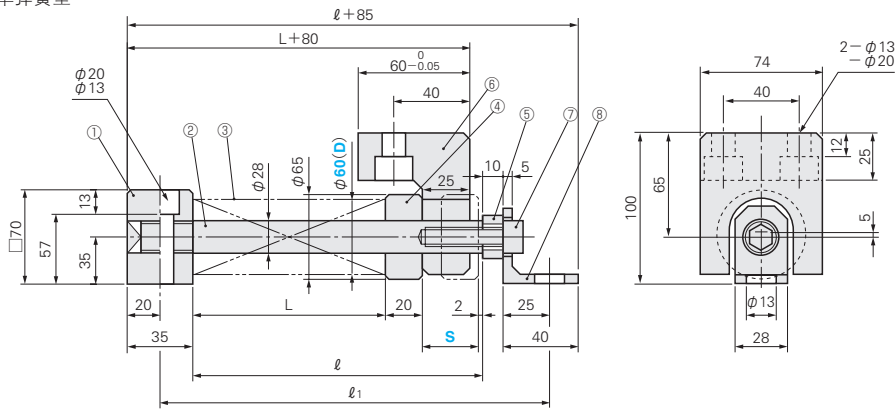
# カム戻し用スプリングユニット 斜楔复位用弹簧组件



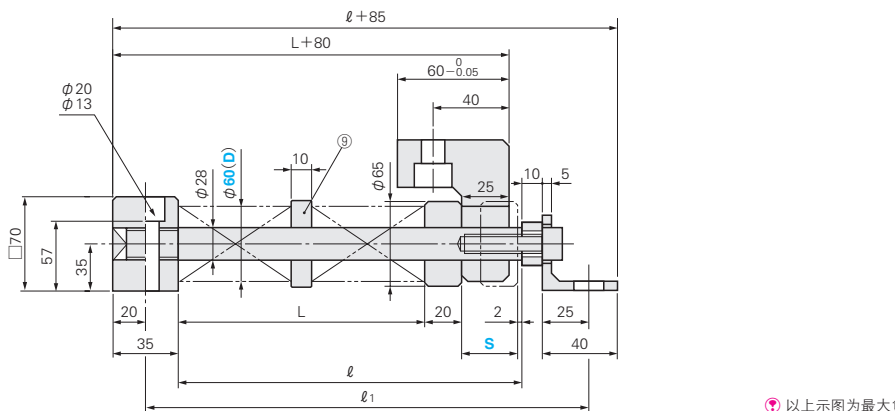
RoHS10

CUSSL 60  
CUSSM 60

● 单弹簧型



● 双弹簧型



⊕ 以上示图为最大负载时的状态。

■ 构成零件表

| No. | 名称   | 数量   | 材质、备注       | No. | 名称    | 数量 | 材质、备注         |
|-----|------|------|-------------|-----|-------|----|---------------|
| ①   | 弹簧块  | 1    | SS400       | ⑥   | 回位板   | 1  | SS400         |
| ②   | 弹簧导销 | 1    | S45C 55HRC~ | ⑦   | 内六角螺栓 | 1  | SCM435 M12×40 |
| ③   | 弹簧   | 1(2) | 请参阅规格表。     | ⑧   | 角铁    | 1  | SS400         |
| ④   | 弹簧压块 | 1    | FC250       | ⑨   | 轴环    | 1  | FC250         |
| ⑤   | 垫圈   | 1    | SS400       |     |       |    |               |

| 弹簧           |     | 负载N (kgf)    |                 | L     |       | ℓ   | ℓ1  | Catalog No. | D  | S   |
|--------------|-----|--------------|-----------------|-------|-------|-----|-----|-------------|----|-----|
| 型号           | 弹簧型 | min.         | max.            | min.时 | max.时 |     |     |             |    |     |
| X-SWL 60-100 | 单   | 1428 (145.6) | 3890<br>(396.7) | 88    | 68    | 110 | 160 | CUSSL       | 60 | 20  |
| X-SWL 60-125 | 单   | 1431 (145.9) |                 | 110   | 85    | 132 | 182 |             |    | 25  |
| X-SWL 60-150 | 单   | 1431 (145.9) |                 | 132   | 102   | 154 | 204 |             |    | 30  |
| X-SWL 60-150 | 单   | 1034 (105.4) |                 | 137   | 102   | 159 | 209 |             |    | 35  |
| X-SWL 60-175 | 单   | 1090 (111.1) |                 | 159   | 119   | 181 | 231 |             |    | 40  |
| X-SWL 60-200 | 单   | 1132 (115.5) |                 | 181   | 136   | 203 | 253 |             |    | 45  |
| X-SWL 60-250 | 单   | 1431 (145.9) |                 | 220   | 170   | 242 | 292 |             |    | 50  |
| X-SWL 60-250 | 单   | 1193 (121.6) |                 | 225   | 170   | 247 | 297 |             |    | 55  |
| X-SWL 60-300 | 单   | 1433 (146.1) |                 | 264   | 204   | 286 | 336 |             |    | 60  |
| X-SWL 60-300 | 单   | 1234 (125.8) |                 | 269   | 204   | 291 | 341 |             |    | 65  |
| X-SWL 60-300 | 单   | 1035 (105.5) |                 | 274   | 204   | 296 | 346 |             |    | 70  |
| X-SWL 60-175 | 双   | 2331 (237.7) |                 | 323   | 248   | 345 | 395 |             |    | 75  |
| X-SWL 60-200 | 双   | 2640 (269.2) |                 | 362   | 282   | 384 | 434 |             |    | 80  |
| X-SWL 60-200 | 双   | 2365 (241.2) |                 | 367   | 282   | 389 | 439 |             |    | 85  |
| X-SWL 60-200 | 双   | 2090 (213.1) |                 | 372   | 282   | 394 | 444 |             |    | 90  |
| X-SWL 60-200 | 双   | 1815 (185.1) |                 | 377   | 282   | 399 | 449 |             |    | 95  |
| X-SWL 60-250 | 双   | 2646 (269.8) |                 | 450   | 350   | 472 | 522 |             |    | 100 |
| X-SWL 60-250 | 双   | 2426 (247.3) |                 | 455   | 350   | 477 | 527 |             |    | 105 |
| X-SWL 60-250 | 双   | 2205 (224.8) |                 | 460   | 350   | 482 | 532 |             |    | 110 |
| X-SWL 60-250 | 双   | 1985 (202.4) |                 | 465   | 350   | 487 | 537 |             |    | 115 |
| X-SWL 60-300 | 双   | 2646 (269.8) | 538             | 418   | 560   | 610 | 120 |             |    |     |
| X-SWL 60-300 | 双   | 2462 (251.1) | 543             | 418   | 565   | 615 | 125 |             |    |     |
| X-SWL 60-300 | 双   | 2279 (232.3) | 548             | 418   | 570   | 620 | 130 |             |    |     |
| X-SWL 60-300 | 双   | 2095 (213.6) | 553             | 418   | 575   | 625 | 135 |             |    |     |
| X-SWL 60-300 | 双   | 1911 (194.9) | 558             | 418   | 580   | 630 | 140 |             |    |     |
| X-SWL 60-300 | 双   | 1727 (176.1) | 563             | 418   | 585   | 635 | 145 |             |    |     |
| X-SWL 60-300 | 双   | 1544 (157.4) | 568             | 418   | 590   | 640 | 150 |             |    |     |
| X-SWM60-125  | 单   | 2112 (215.4) | 5640<br>(575.1) | 113   | 93    | 135 | 185 | CUSSM       | 60 | 20  |
| X-SWM60-150  | 单   | 2058 (209.9) |                 | 136   | 111   | 158 | 208 |             |    | 25  |
| X-SWM60-200  | 单   | 2310 (235.6) |                 | 179   | 149   | 201 | 251 |             |    | 30  |
| X-SWM60-225  | 单   | 2156 (219.9) |                 | 203   | 168   | 225 | 275 |             |    | 35  |
| X-SWM60-250  | 单   | 2117 (215.9) |                 | 226   | 186   | 248 | 298 |             |    | 40  |
| X-SWM60-300  | 单   | 2279 (232.3) |                 | 269   | 224   | 291 | 341 |             |    | 45  |
| X-SWM60-350  | 单   | 2457 (250.5) |                 | 311   | 261   | 333 | 383 |             |    | 50  |
| X-SWM60-350  | 单   | 2142 (218.4) |                 | 316   | 261   | 338 | 388 |             |    | 55  |
| X-SWM60-200  | 双   | 2860 (291.6) |                 | 358   | 298   | 380 | 430 |             |    | 60  |
| X-SWM60-200  | 双   | 2585 (263.6) |                 | 363   | 298   | 385 | 435 |             |    | 65  |
| X-SWM60-225  | 双   | 2744 (279.8) |                 | 404   | 334   | 426 | 476 |             |    | 70  |
| X-SWM60-250  | 双   | 2778 (283.3) |                 | 447   | 372   | 469 | 519 |             |    | 75  |
| X-SWM60-250  | 双   | 2558 (260.8) |                 | 452   | 372   | 474 | 524 |             |    | 80  |



Order  
订货范例

|             |    |   |    |
|-------------|----|---|----|
| Catalog No. | D  | - | S  |
| CUSSL       | 60 | - | 80 |
| CUSSM       | 60 | - | 50 |



Delivery  
交货期

请通过 **MISUMI** 询价。  
(<https://www.misumi.com.cn>)



Alterations  
追加工

|             |    |   |    |   |     |
|-------------|----|---|----|---|-----|
| Catalog No. | D  | - | S  | - | (T) |
| CUSSL       | 60 | - | 80 | - | T   |

| Code | Spec.    |
|------|----------|
| T    | 弹簧改为东发弹簧 |