

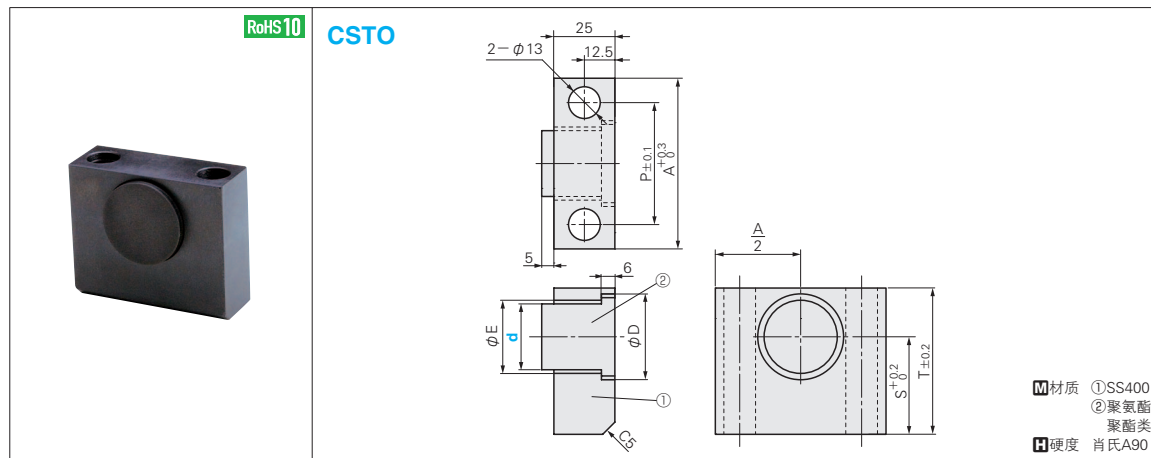
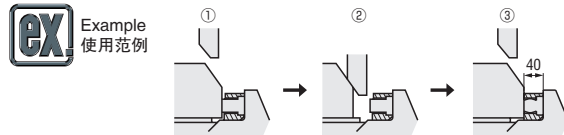
A	T	D	S	E	P	F 最大负载N (kgf)	Catalog No. Type	d
70	60	35	40	30	50	5100 (520)	CCS	27
80	70	45	45	40	60	9610 (980)	CCS	36

Order 订货范例  
Delivery 交货期

Catalog No.  
CCS 36

库存品

隔日上海・广州发货 P.41  
(17:00前订购的库存品可当日发货。)

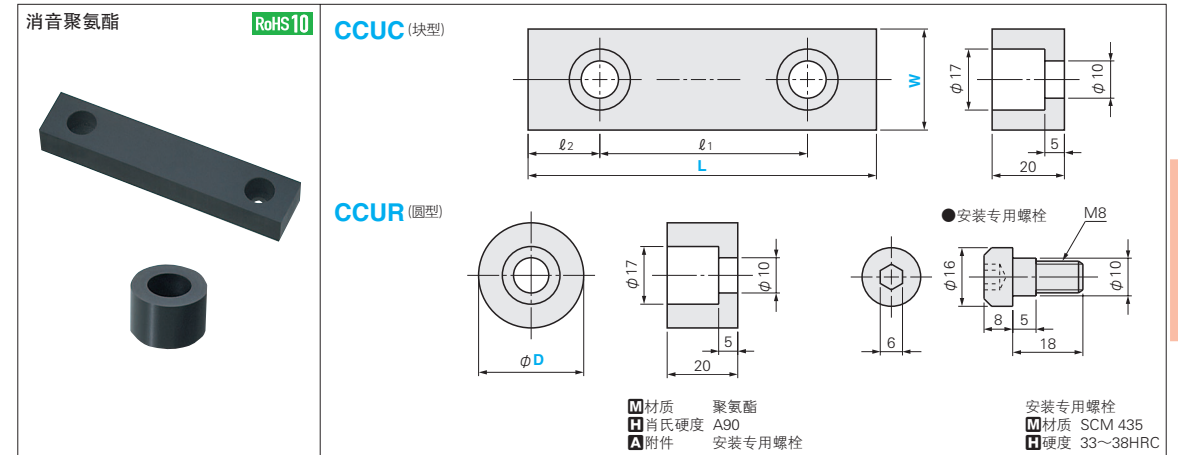


A	T	D	S	E	P	F 最大负载N (kgf)	Catalog No. Type	d
70	60	35.2	40	30	50	2100 (214)	CSTO	27
80	70	45.2	45	40	60	4200 (428)	CSTO	36

Order 订货范例  
Delivery 交货期

Catalog No.  
CSTO 36

请通过 **MISUMI** 询价。  
(<https://www.misumi.com.cn>)

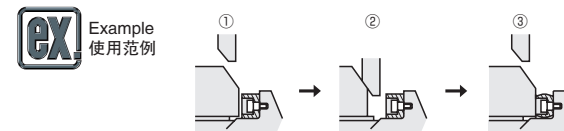


■块型 (带2个安装专用螺栓)

ℓ1	ℓ2	Catalog No. Type	W	L
60	20	CCUC	30	100
110	150			
140	200			

■圆型 (带1个安装专用螺栓)

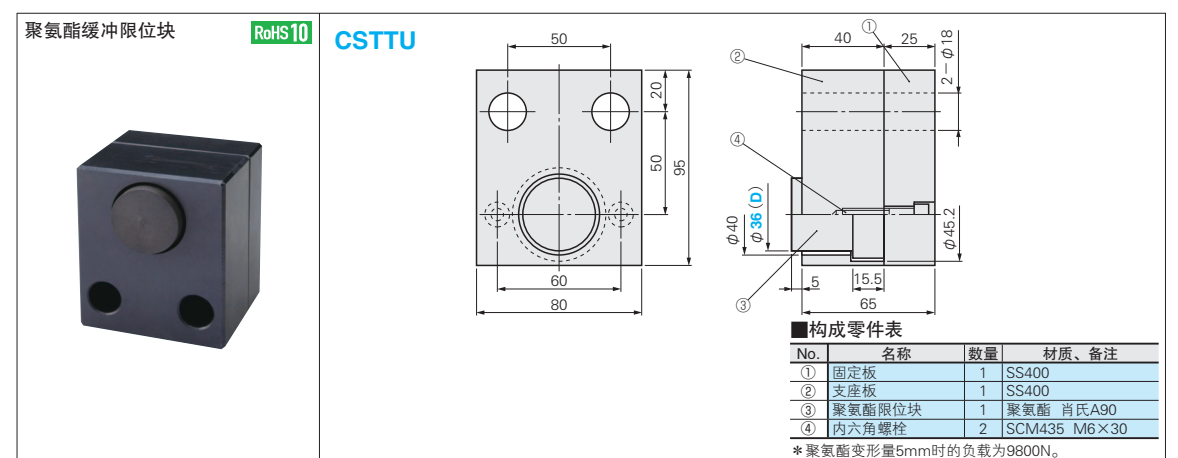
Catalog No.	
Type	D
CCUR	30



Order 订货范例  
Delivery 交货期

Catalog No. - L  
CCUC 30 - 100

请通过 **MISUMI** 询价。  
(<https://www.misumi.com.cn>)



Catalog No.	D
CSTTU	36

Order 订货范例  
Delivery 交货期

Catalog No. D  
CSTTU 36

请通过 **MISUMI** 询价。  
(<https://www.misumi.com.cn>)