

# ダイセット用ガイドポスト 模架用导柱

RoHS 10

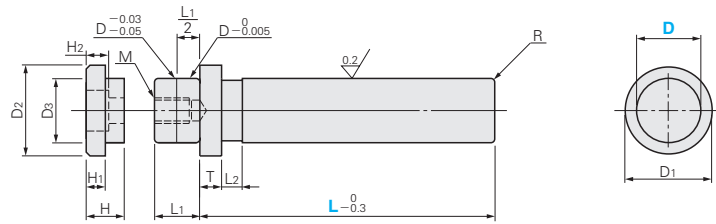
—拆卸型—



—压入型—

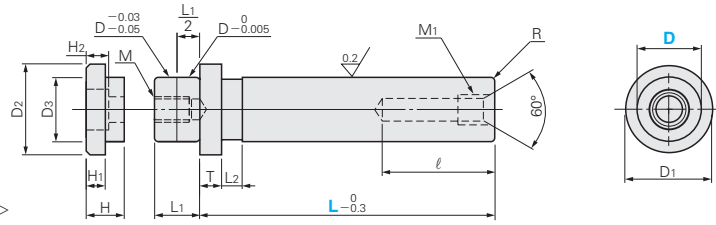


## MRP



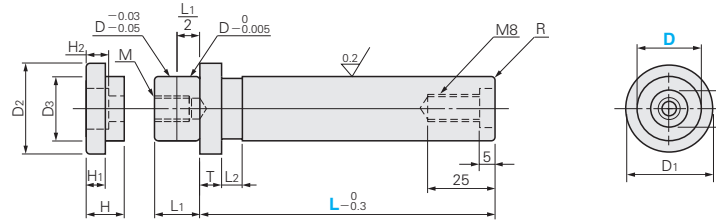
## BRPM

(可动挡块STM用)

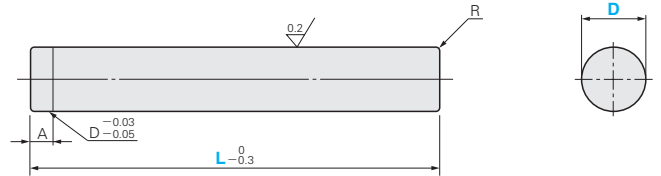


## BRPK

(固定挡块STK用)

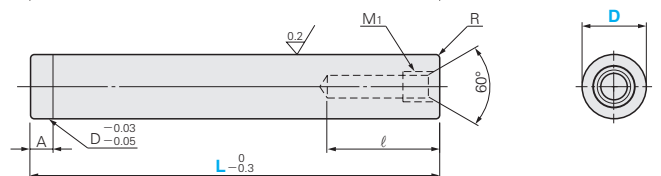


## MSP



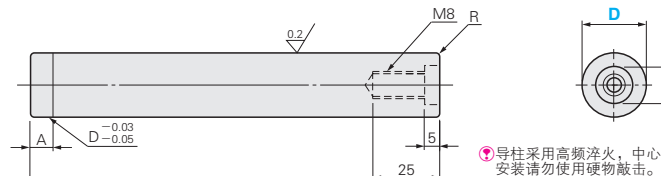
## BSPM

(可动挡块STM用)



## BSPK

(固定挡块STK用)



● 导柱采用高频淬火，中心无硬度，  
安装请勿使用硬物敲击。  
■ 材质 H 硬度 58HRC~高频淬火  
SUJ2 (深度1.5~2.0mm)

D	D1	T	L1	L2	ℓ	M1×P	d	A	M	R	D2	D3	H	H1	H2	▲ 附属螺栓
20	29	5	15	10	38	M10×1.5	14	4	M 8×18	2.0	28	19.5	14	7	8.5	CB 8-25
22	31	8	16		42						30	21.5				
25	35	10	18	50	M12×1.5	20	5	M10×22	3.5	36	27.5	16	8	10.5	CB10-30	
28	39		20	50						36	27.5					
32	44	12	23	60	M16×1.5	20	6	M12×27	4.0	49	37.5	18	10	12.5	CB12-35	
38	53		27	60						49	37.5					
45	59	15	32	70	M16×1.5	20	7	M14×31	5.0	62	49.5	20	12	14.5	CB14-40	
50	69		35	70						62	49.5					
60	79	42	70	72	59.5	72	59.5	72	59.5	72	59.5	72	59.5	72	59.5	

Catalog No.	Type	D	L															
			80	90	100	110	120	130	140	150	160	170	180	200				
MRP	20					110	120	130			140	150	160			170	180	200
	22					110	120											
	25																	
	28																	
	32																	
	38																	
BRPM	20																	
	22																	
	25																	
	28																	
	32																	
	38																	
BRPK	20																	
	22																	
	25																	
	28																	
	32																	
	38																	

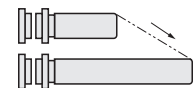
Catalog No.	Type	D	L															
			100	110	120	130	140	150	160	170	180	190	200	220	240	260		
MSP	20																	
	22																	
	25																	
	28																	
	32																	
	38																	
BSPM	20																	
	22																	
	25																	
	28																	
	32																	
	38																	
BSPK	20																	
	22																	
	25																	
	28																	
	32																	
	38																	

Order 订货范例 Catalog No. - L  
BSPM 32 - 180

Delivery 交货期 库存品  
● 隔日上海·广州发货 (P.41)  
(17:00前订购的库存品可当日发货。)  
● 数量≥51时，请另询交货期。

Alterations 追加加工 Catalog No. - L(LC)  
MRP 20 - LC77

● 有关长度加长指定型  
导柱，请参阅P.949。



Alteration	Code	Spec.				
		变更全长 指定单位1mm				
MRP-BRPM-BRPK	LC	LC				
		D	MRP	BRPM-BRPK	MSP	BSPM-BSPK
MSP-BSPM-BSPK	LC	20	60~199	70~199	70~179	80~179
		22	60~119	70~119	70~179	80~179
		25	60~129	81~129	70~179	80~179
		28	60~159	80~159	70~199	80~199
		32	60~159	100~159	70~239	80~239
		38	60~179	100~179	70~259	80~259
		45	60~179	120~179	70~259	90~259
		50	60~199	120~199	70~259	90~259
		60	60~199	120~199	70~259	90~259