



代表型號：E-TGSSB6I

50 1個起訂
元/個

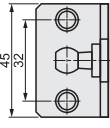
數量	折扣	出貨日
1~98	-	6日

◎若超過以上訂購數量，交期另外洽詢。實際出貨日與價格以「訂購」時報價單中的內容為準。

CAD 3D

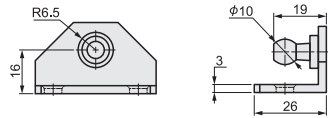
E-TGSSB6A

材質：SPHC
板：SPHC
鉚釘：SAE1215
表面處理：黑色電著



E-TGSSBS6A

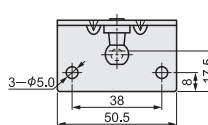
材質：SUS304



※請搭配接頭：Y2、Y3、Y5、Y12

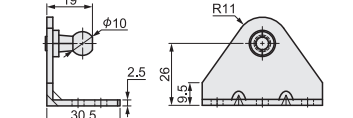
E-TGSSB6B

材質：SPHC
板：SPHC
鉚釘：SAE1215
表面處理：黑色電著



E-TGSSBS6B

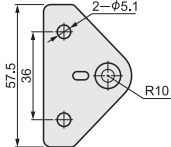
材質：SUS304



※請搭配接頭：Y2、Y3、Y5、Y12

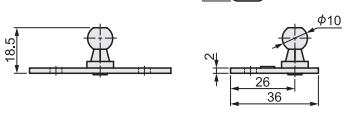
E-TGSSB6C

材質：SPHC
板：SPHC
鉚釘：SAE1215
表面處理：黑色電著



E-TGSSBS6C

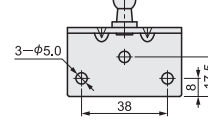
材質：SUS304



※請搭配接頭：Y2、Y3、Y5、Y12

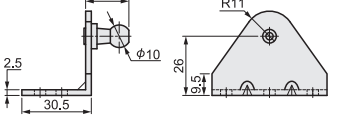
E-TGSSB6E

材質：SPHC
板：SPHC
鉚釘：SAE1215
表面處理：黑色電著



E-TGSSBS6E

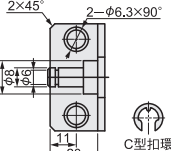
材質：SUS304



※請搭配接頭：Y2、Y3、Y5、Y12

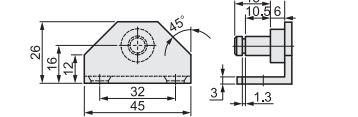
E-TGSSB6F

材質：SPHC
板：SPHC
鉚釘：SAE1215
C型扣環：彈簧用鋼
表面處理：黑色電著



E-TGSSBS6F

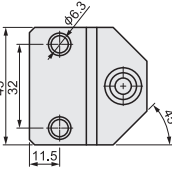
材質：SUS304



※請搭配接頭：Y1、Y4、Y6、Y8、Y9、Y13、Y14

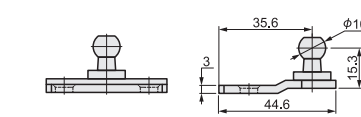
E-TGSSB6D

材質：SPHC
板：SPHC
鉚釘：SAE1215
表面處理：黑色電著



E-TGSSBS6D

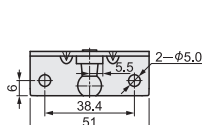
材質：SUS304



※請搭配接頭：Y2、Y3、Y5、Y12

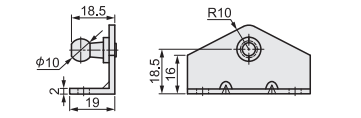
E-TGSSB6G

材質：SPHC
板：SPHC
鉚釘：SAE1215
表面處理：黑色電著



E-TGSSBS6G

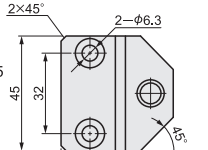
材質：SUS304



※請搭配接頭：Y2、Y3、Y5、Y12

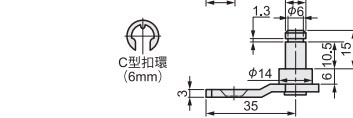
E-TGSSB6H

材質：SPHC
板：SPHC
鉚釘：SAE1215
C型扣環：彈簧用鋼
表面處理：黑色電著



E-TGSSBS6H

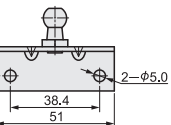
材質：SUS304



※請搭配接頭：Y1、Y4、Y6、Y8、Y9、Y13、Y14

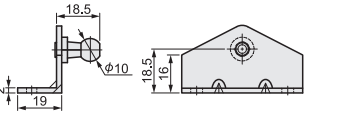
E-TGSSB6I

材質：SPHC
板：SPHC
鉚釘：SAE1215
表面處理：黑色電著



E-TGSSBS6I

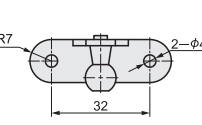
材質：SUS304



※請搭配接頭：Y2、Y3、Y5、Y12

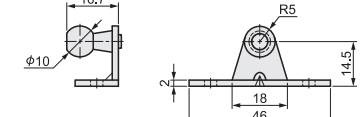
E-TGSSB6J

材質：SPHC
板：SPHC
鉚釘：SAE1215
表面處理：黑色電著



E-TGSSBS6J

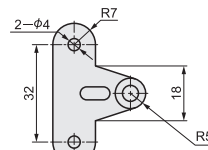
材質：SUS304



※請搭配接頭：Y2、Y3、Y5

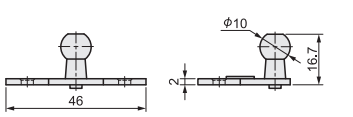
E-TGSSB6K

材質：SPHC
板：SPHC
鉚釘：SAE1215
表面處理：黑色電著



E-TGSSBS6K

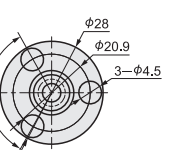
材質：SUS304



※請搭配接頭：Y2、Y3、Y5

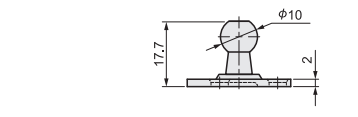
E-TGSSB6L

材質：SPHC
板：SPHC
鉚釘：SAE1215
表面處理：黑色電著



E-TGSSBS6L

材質：SUS304



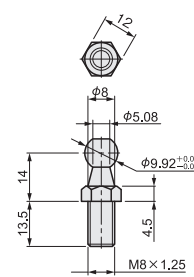
※請搭配接頭：Y2、Y3、Y5

E-TGSSB6M

材質：AISI 12L14
表面處理：鍍黑鋅

E-TGSSBS6M

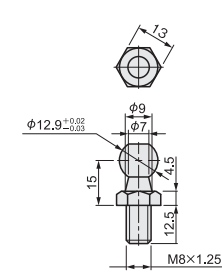
材質：SUS303



※請搭配接頭：Y2、Y3、Y5、Y12

E-TGSSB6N

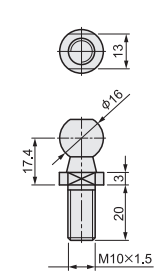
材質：AISI 12L14
表面處理：鍍黑鋅



※請搭配接頭：Y7

E-TGSSB6O

材質：1015
表面處理：鍍黑鋅



※請搭配接頭：Y10

型式		適用接頭	重量 (g)
1Type	2No.		
E-TGSSB	6A	Y2 · Y3 · Y5 · Y12	31
	6B		57
	6C		29
	6D		30
	6E		58
	6G		52
	6I	37	
	6J	52	
	6K	Y2 · Y3 · Y5	37
	6L	17	
E-TGSSBS	6M	Y2 · Y3 · Y5 · Y12	17
	6F	Y1 · Y4 · Y6 · Y8 · Y9 · Y13 · Y14	14
	6H	14	
	6N	Y7	19
	6O	Y10	34
	6A	Y2 · Y3 · Y5 · Y12	30
	6B		57
	6C		29
	6D		30
	6E		56
6G	52		
6I	37		
6J	Y2 · Y3 · Y5	51	
6K		37	
6L		17	
6M		Y2 · Y3 · Y5 · Y12	17
6F	Y1 · Y4 · Y6 · Y8 · Y9 · Y13 · Y14	14	
6H		14	

◎6J、6K、6L因固定座配件較小且板厚只有2mm，建議氮氣缸壓力200N以內再選用。

Order 訂購範例 請依照選定步驟1~2選擇型式和數值後再行訂購。
型式 (1Type · 2No.)
E-TGSSB6I