

追加規格
以紅字表示

LOCATING PINS LARGE TAPER HEAD TYPE

定位銷 大頭錐型

一錐形角度指定・DP公差選擇一

大訂單
對應
BIG ORDER

Ⓣ非型錄規格商品請參照 P.131

■特長：大頭錐型的各部位尺寸可自由指定。此外，亦可指定兩端部公差及錐形尺寸。

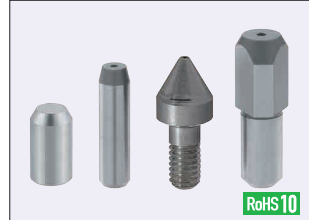
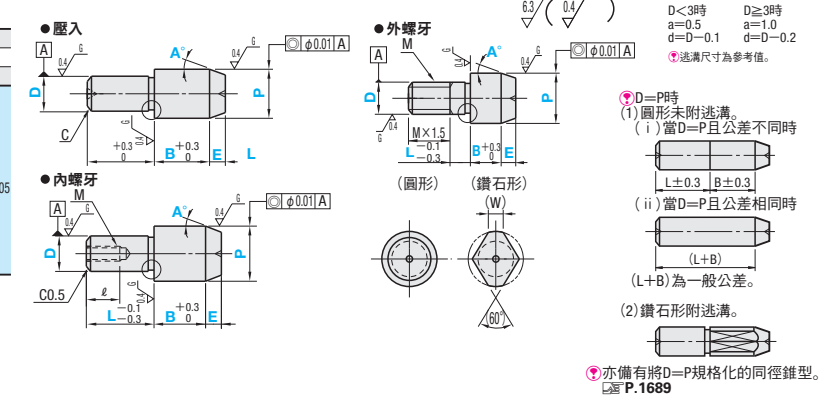


Table with columns: 材質 No., 材質, 表面處理, 硬度, Type (壓入, 內螺牙, 外螺牙), 形狀記號. Lists materials like SKS3, SUS304, SUS304C and their properties.

■公差選擇

Table for tolerance selection with columns: D或P, 一般級, 精密級. Lists dimensions from 1.00 to 30.00 and corresponding tolerance grades.



■壓入

Table for insertion specifications. Columns: Type, 形狀, D公差選擇, P公差選擇, D, P, L, B, E, A選擇, C, (W). Lists pin types like KF, GKF, BK, SK, HK, CK.

■內螺牙

Table for internal thread specifications. Columns: Type, 形狀, D公差選擇, P公差選擇, D, P, L, B, E, A選擇, (W), M (粗螺紋), 緊固扭矩, l. Lists pin types like KFT, GKFT, BKFT, SKFT, HKFT, CKFT.

■外螺牙

Table for external thread specifications. Columns: Type, 形狀, D公差選擇, P公差選擇, D, P, L, B, E, A選擇, M (粗螺紋), 緊固扭矩, (W). Lists pin types like KFN, GKFN, BKFN, SKFN, HKFN.

Order form table with columns: Order 訂購規格, 型式, Type, 形狀, 公差, 長度, D, P, L, B, E, A. Includes price and delivery info.

Delivery and Price information table. Columns: Delivery 出貨日, Price 價格. Includes logos for WOS and NTS.

■壓入

Table for insertion specifications with columns: D, NTS標準單價 (圓形, 鑽石形). Lists pin types like SKS3, SUS304, SUS304C.

■內螺牙

Table for internal thread specifications with columns: D, NTS標準單價 (圓形, 鑽石形). Lists pin types like SKS3, SUS304, SUS304C.

■外螺牙

Table for external thread specifications with columns: D, NTS標準單價 (圓形, 鑽石形). Lists pin types like SKS3, SUS304, SUS304C.

Alteration 追加加工 table with columns: Alteration 追加加工, 型式, P, L, B, E, A. Lists options like MH, GDC, RC, AC, SC, LAC.

Spec. section containing technical diagrams for MH, GDC, RC, AC, SC, LAC processes with associated dimensions and notes.

1-1637 P尺寸()・L尺寸()・B尺寸()適用於鑽石形... 緊固扭矩(參考值)請見技術資料 P.3035...